

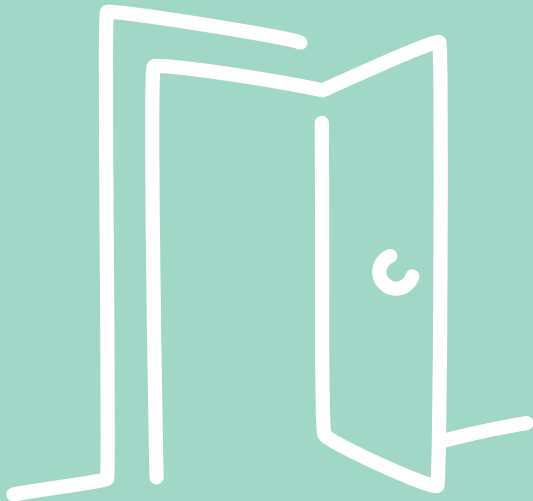
Reconnect can help:

- Young people aged 12-18 years and their families
- Young people and families living in the Campbelltown, Camden and Wollondilly Local Government Areas
- Young people who are at risk of leaving home or have recently left home and need support to reconcile with their family.

How to access the program

Young people and families can access the program themselves, or be referred by someone on their behalf, providing the young person and / or family have agreed.

Reconnect aims to make sure young people have a bright future by preventing homelessness and supporting young people to remain with their families.



Reconnect Macarthur

Hours of service

Monday to Friday, 9am-5pm

You can visit our office or we can come to you.

Get in touch

If you call outside of these hours, a member of our team will return your call the next business day.

Once a referral has been taken, we will arrange an assessment meeting to determine how Reconnect can help.

Uniting South West Sydney and Macarthur Youth Centre

6-8 Iolanthe Street
Campbelltown NSW 2560

T: (02) 4629 5170 or 4629 5137

F: (02) 4627 3234

E: reconnectinfo@uniting.org

uniting.org

Macarthur Reconnect is a Commonwealth Government initiative of the Department of Social Services developed in response to a recommendation of the Prime Ministerial Youth Homeless Taskforce "Putting Families in the Picture."

ABN 78 722 539 923

© Copyright Uniting 2016



Uniting

About Uniting Burnside Reconnect

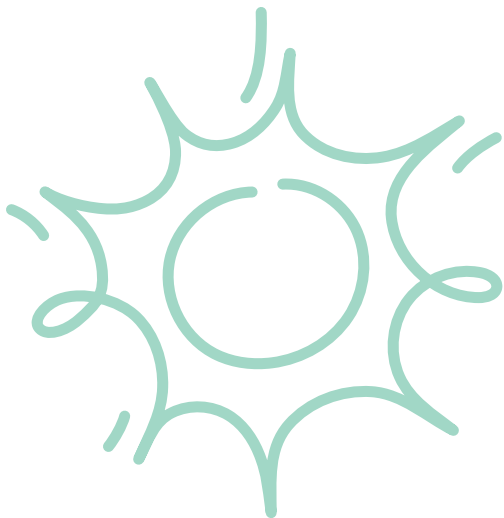
“Working with Young people and their families for a brighter and fairer future”

Reconnect works with young people and families who are having difficulties with family relationships.

It is an early intervention, short term casework program for young people aged 12-18 years and their families living in the Campbelltown, Camden and Wollondilly Local Government Areas. Reconnect is a no fee for service program.

Reconnect provides a holistic, strength-based approach to young people and their families who are experiencing conflict and where there is a risk of homelessness.

The program provides support and strategies to work through issues causing conflict to achieve solutions and strengthen family relationships.



Young people and their families can receive the following support and assistance from Reconnect caseworkers:

- **Casework** – short-term (approx. 10-12 weeks) using a strengths-based approach to assist you to identify issues, strengths, plan goals to work toward and achieve solutions
- **Mediation** – Reconnect workers can assist families through structured sessions to identify issues of conflict, develop options, consider alternatives and reach agreements to support needs
- **Group work** – Reconnect provides group work for young people and parents including:
 - Assertiveness development workshops in high schools
 - Triple P – parenting education
- **Referral** – putting you in touch with other services that may be helpful including specialist counsellors or other services within the community

About Uniting

At Uniting, we believe in taking real steps to make the world a better place. We work to inspire people, enliven communities and confront injustice.

We believe in standing up for a just and fair society. For more than 100 years, we have worked with children, young people and families, particularly those who are disadvantaged, vulnerable and isolated.

We acknowledge the traditional owners of the land, and pay our respect to Elders past and present.